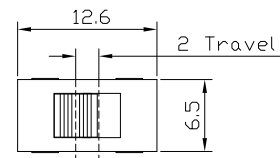
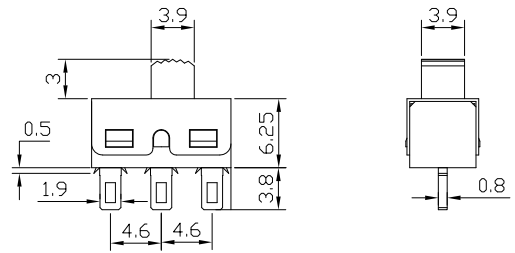


Since 1995, we focus on switches



XN-9-1209-HAO

- Single Pole; Single Throw
- Ratings:  
9A 125VAC; 4.5A 250VAC; UL  
4.5A 250VAC; TUV, CQC
- Features:  
Knob, Terminal Options see selections guide



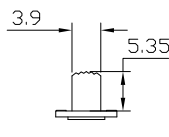
Circuit Diagram



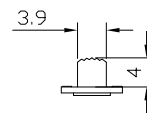
XN-9- 1 2 0 9 - XXO

Single Pole	1	2	0	9	-	X	X	O	Housing Code
2 Position	1	2	0	9	-	X	X	O	Terminal Code
Current at 125VAC	1	2	0	9	-	X	X	O	Actuator Code

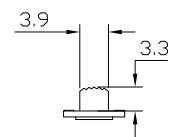
### Actuator Options



G

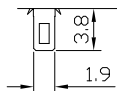


I

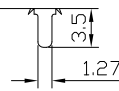


H

### Terminal Options



A



B